

PEDESTRIAN

PRODUCTS PORTFOLIO



SlimLane EVO

SWING BARRIER SPEED GATES

SlimLane EVO is a premium optical turnstile that combines architectural design with high-precision detection, a future-proof electronic & software platform but also a cabinet that is customizable and easy to install.



Transparent, sleek and future-proof design



Unified brushless motor requiring minimal maintenance



Cybersecure software platform



Tested reliability with 10 million MCBF



Connectivity



Customizable to enhance any architectural style

UL2593 listed to ensure user safety

Intuitive lighting for improved user experience

Egress operating mode – obstacles open in exit direction with a simple push

SLIMLANE EVO



- Security Speed Gate
- Passage widths: 23" (585 mm) / 36" (915 mm)
- Obstacle heights: 35 1/2" / 38 9/16" / 47" / 59" / 67" / 72" (900 / 980 / 1200 / 1500 / 1700 / 1830 mm)
- Length: Std: 61 13/16" (1570 mm)



SLIMLANE EVO SC



- Security Speed Gate with compact footprint
- Passage widths: 23" (585 mm) / 36" (915 mm)
- Obstacle heights: 35 1/2" / 38 9/16" / 47" / 59" / 67" / 72" (900 / 980 / 1200 / 1500 / 1700 / 1830 mm)
- Length: Std: 46 7/8" (1190 mm)



SLIMLANE EVO EP



- Security Speed Gate with scalable integration extension post
- Passage widths: 23" (585 mm) / 36" (915 mm)
- Obstacle heights: 35 1/2" / 38 9/16" / 47" / 59" / 67" / 72" (900 / 980 / 1200 / 1500 / 1700 / 1830 mm)
- Length: Std: 64" (1626 mm)



CUSTOMIZATION AVAILABLE



FirstLane

SPEED GATES

The FirstLane swing speed gate provides a modern and elegant entrance control solution. The black steel housing combined with elegant glass obstacles respects the newest architectural trends



Modern and stylish look

Dynamic lighting and pictograms for a more intuitive user experience

Best in class for throughput and electronic detection thanks to the proprietary DIRAS detection system

Predictive algorithms ensure fraud detection such as tailgating & piggybacking

Housing provides space for multiple integrations including RFID, QRcode, barcode and biometric devices

FIRSTLANE PLUS is outdoor compatible (IP44)

FirstLane PLUS

OUTDOOR SPEED GATES



FIRSTLANE PLUS High Aero Obstacles

- Passage widths: 24 3/16" (584 mm) or 36" (915 mm)
- Obstacle height: 68 7/8" (1750 mm)

FIRSTLANE PLUS Low Aero Obstacles

- Passage widths: 24 3/16" (584 mm) or 36" (915 mm)
- Obstacle height: 35 3/4" (908 mm)

INDOOR SPEED GATES



FIRSTLANE High Glass Obstacles

- Passage widths: 24 3/16" (584 mm) or 36" (915 mm)
- Glass heights: 47 1/4" (1200 mm) / 59 1/16" (1500 mm) / 66 15/16" (1700 mm) / 70 7/8" (1800 mm)



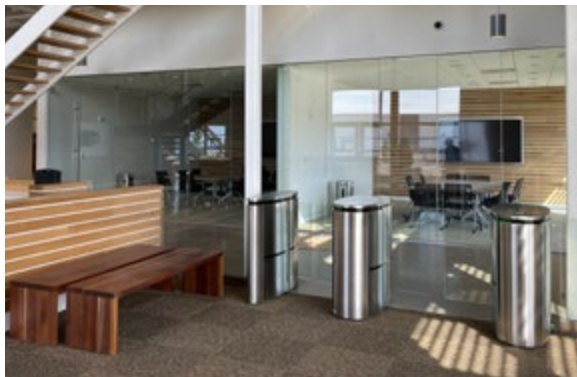
FIRSTLANE Low Glass Obstacles

- Passage widths: 24 3/16" (584 mm) or 36" (915 mm)
- Glass height: 35 7/16" (900 mm)



RETRACTABLE BARRIER OPTICAL TURNSTILES

SmartLane Security Entrance Lanes are ideal for applications requiring secure bidirectional passage control where safety and throughput are key.



Sleek and elegant design

High performance detection system

High throughput

Proven reliability – 10 million MCBF

UL325 listed to ensure user safety

IP Communication

Customization

SMARTLANE 900

- Compact footprint
- Passage width:
23" (585 mm)
- Obstacle heights:
39" / 47" / 67"
(990 / 1200 / 1700 mm)



SMARTLANE 910

- Wide lane
- Passage width:
36" (915 mm)
- Obstacle heights:
39" / 47" / 67"
(990 / 1200 / 1700 mm)



SMARTLANE 901

- Enhanced entrance control
- Passage width:
23" (585 mm)
- Obstacle heights:
39" / 47" / 67"
(990 / 1200 / 1700 mm)



SMARTLANE 911

- Wide lane with enhanced entrance control
- Passage width:
36" (915 mm)
- Obstacle heights:
39" / 47" / 67"



SMARTLANE 902

- Enhanced entrance & exit control
- Passage width:
23" (585 mm)
- Obstacle heights:
39" / 47" / 67"
(990 / 1200 / 1700 mm)



SMARTLANE 912

- Wide lane with enhanced entrance & exit control
- Passage width:
36" (915 mm)
- Obstacle heights:
39" / 47" / 67"
(990 / 1200 / 1700 mm)



CUSTOMIZATION AVAILABLE



AccessLane

BIDIRECTIONAL SWING GATES

The AccessLane swing gate facilitates the passage of people with reduced mobility (wheelchair users, service staff with trolleys, bulky equipment, etc.).



With its transparent, elegant design and minimal footprint, the AccessLane is designed to integrate perfectly into any architectural style while offering a high bidirectional throughput.



Automatic swing gate

Smooth and silent movement

Obstacles available up to 72" (1830mm) in height

Custom passage widths

Bi-directional (swings in entry & exit direction)



AL 933

- Passage width: 36" (915 mm)
- Glass heights: 35 1/2" / 47" (900 / 1200 mm)

AL 934

- Passage width: 36" (915 mm)
- Glass heights: 59" / 67" / 72" (1500 / 1700 / 1830 mm)

Safety Swing Gate

The Safety Swing Gate (SSG) is a simple but efficient product designed to facilitate the evacuation of the building in case of an emergency. The SSG can be connected to the fire alarm system to unlock the door in case of an emergency.

The 36 in (914mm) standard passage width is ADA compatible for reduced mobility users, and can also be used by service staff with trolleys or bulky equipment.



Manual swing gate

Panic bar for emergency exit

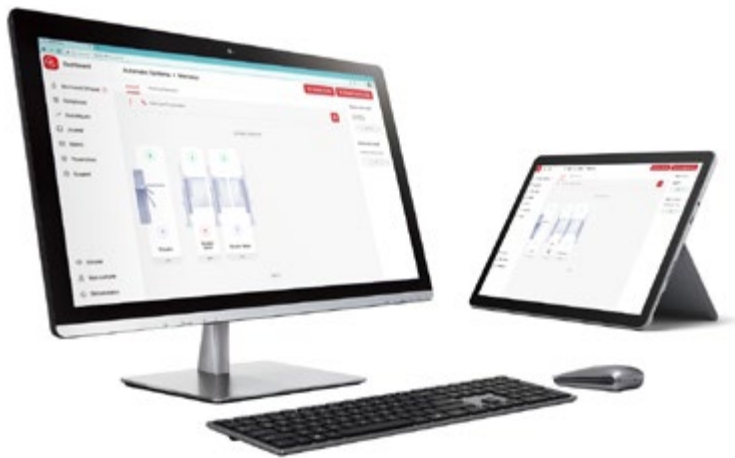
Obstacles available up to 72" (1800mm) in height

Custom passage widths

Uni-directional (swings in exit direction)



ASLYNK™, THE MONITORING AND CONTROL INTERFACE FOR AUTOMATIC SYSTEMS EQUIPMENT



The ASLYNK™ solution offers a secure intuitive control and monitoring interface for Automatic Systems pedestrian and vehicle access control equipment. ASLYNK™ allows multi-site remote control of your equipment for up to 500 lanes regardless of location. ASLYNK™ is available on PC or tablet.

- Remote monitoring and control
- Remote diagnostics, maintenance and updates
- Compatible with new and installed equipment
- Multi site, multi-entity such as via a centralized control room
- Cyber secure, on a closed LAN network
- Various licensing packages and pricing

SECURITY 

SAFETY 

CONNECTIVITY 

Smart Touch

The Smart Touch is a simple yet elegant solution for managing one or two access control areas remotely, via an Ethernet network.

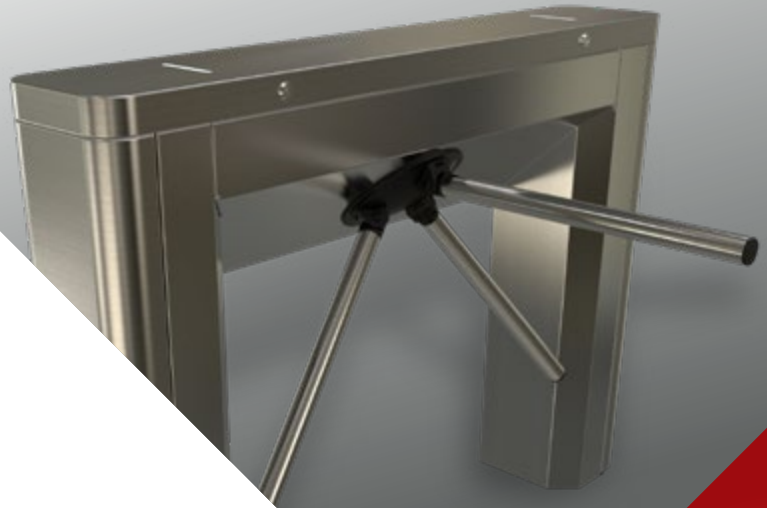
The 10" touchscreen offers several viewing options in order to provide you with a clear image of your facility.





TRIPOD TURNSTILES

Automatic Systems' indoor/outdoor TriLane tripod turnstiles offer a simple, economical and compact solution to control access.



TL1
Single column



TL2
Two columns



Single passage every time

Built to withstand intensive/abusive use

Collapsible arm in case of emergency or power failure (option)

IP connectivity for remote monitoring control

IP44 suitable for outdoor installations

Integration of multiple peripherals (biometric, proximity, etc.)

Can operate in temperatures as low as -40° F / -40° C (with optional heaters)

Superior mechanical systems and electronics

Crawl under and jump over detection (option)

Highly reliable (MCBF of 5 million cycles)

STANDARD
RAL COLOR



RAL 9005
Black

All other finishes must be specified when ordering.

TRS SERIES

FULL-HEIGHT TURNSTILES

Indoor/outdoor Turnstiles mainly used to control the perimeter of enclosed areas. They are bidirectional turnstiles that ensure single-user throughput and work well even in the harshest weather conditions.

3 million MCBF (Mean Cycles Between Failures)



TRS 370P

- Full-Height Turnstile
- Single passage
- 3 sections
- Passage width: 26 1/4" (666 mm)



TRS 370

- Full-Height Turnstile
- Single passage
- 3 sections
- Passage width: 25 1/4" (640 mm)



TRS 372

- Full-Height Turnstile
- Dual passage
- 2 x 3 sections
- Passage width: 2 x 25 1/4" (2 x 640 mm)



MOBILE OPTION AVAILABLE



STANDARD
RAL COLOR



RAL 7038
Light grey

ClearLock

SECURITY BOOTHS

Automatic Systems' ClearLock Security Doors are square or cylindrical booths that ensure strict entrance control and are especially designed for sensitive sites. Combining high security and elegance, the ClearLock series is available in different sizes, shapes and finishes, with single or double doors both on entry and exit.



CLEARLOCK 637

- Passage width: 35 7/16" (900 mm)
- External diameter:
Ø 59" (1500 mm)
H: 92 1/2" (2350 mm)



CLEARLOCK 646

- Passage width: 27 1/2" (700 mm)
- Footprint:
L: 45 1/4" (1150 mm)
W: 45 1/4" (1150 mm)
H: 92 15/16" (2360 mm)



CLEARLOCK 656

- Passage width: 35 7/16" (900 mm)
- Footprint:
L: 58 1/2" (1485 mm)
W: 74 3/4" (1900 mm)
H: 94 1/2" (2400 mm)



STANDARD RAL COLORS



RAL 7035
Light grey



RAL 9011
Black



RAL 9010
White



RAL 8019
Dark brown

All other finishes must be specified when ordering.

Bullet & vandalism resistant glass available (option)

Wide range of finishes (stainless steel, painted...)

Numerous accessories available to meet site specific requirements

Remote monitoring and control via TCP/IP connectivity

Single person detection using vision based camera (T model)
or an integrated weight sensor systems

Other configurations and models available

RevLock

REVOLVING SECURITY DOORS

Automatic Systems' RevLock offers the most effective flow management solution for physical and electronic security of automated entrance control.



REVLOCK 603 / 603T

- Passage width: 35 15/16" (913 mm)
- External diameter: 77 9/16" (1938 mm)



REVLOCK 604 / 604T

- Passage width: 42 5/16" (1090 mm)
- External diameter: 71 1/4" (1810 mm)



REVLOCK 614

- Passage width: 30 13/16" (783 mm)
- External diameter: 71 1/4" (1810 mm)



STANDARD RAL COLORS



All other finishes must be specified when ordering.

Single Presence detection with 3D stereo camera (T Model) or weight sensor system

Light, modern structure featuring large glass surface

Electronic and mechanical parts located in canopy for easy access

Remote management using TCP/IP connectivity

Bullet & vandalism resistant glass available (option)

SERVICE



SERVICES OFFERED UPON REQUEST

At AUTOMATIC SYSTEMS, our commitment extends beyond delivering high-quality equipment. We provide a range of professional services to support you throughout the life of the products, ensuring their long-term performance and reliability.



OUR SERVICES INCLUDE:

- ◆ **Installation and Commissioning** to guarantee optimal setup.
- ◆ **Maintenance** (preventive and repair) to keep your equipment running smoothly.
- ◆ **Spare Parts** for fast, reliable replacements.
- ◆ **Training** to equip your team with the necessary skills.
- ◆ **Technical support** to help troubleshoot and resolve issues.

We're ready to support you, ensuring your peace of mind and the long-term performance of your equipment

OUTDOOR PERIMETER SECURITY

SECURE WHAT MATTERS—RELIABLY, INTELLIGENTLY, AND WITHOUT COMPROMISE.

Automatic Systems' outdoor perimeter security solutions are designed to protect your sites while ensuring smooth, controlled access. From high-security vehicle barriers to robust pedestrian control, our products deliver performance you can trust in even the harshest environment.



AS1



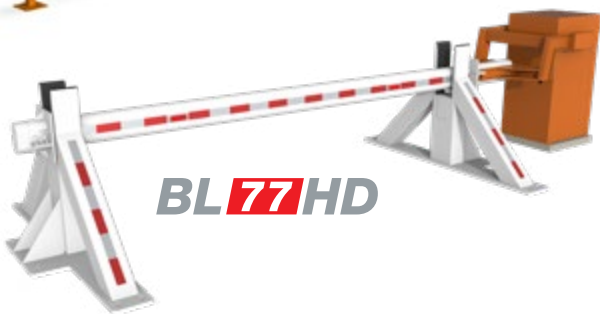
FI FirstLane PLUS



BL4



TRS SERIES



BL77HD



BLG77



BLG77HD

TO LEARN MORE

about our perimeter security solutions, contact us at sales.nam@automatic-systems.com.

Scan for your
local sales
representative

AK

YT

NWT

NU

BC

AB

SK

MB

ON

QC

NL

NB

NS

WA

MT

ND

MN

ME

OR

ID

WY

SD

WI

NY

VT

NH

MA

CA

NV

UT

CO

NE

KS

MO

IA

IL

IN

OH

MI

PA

WV

VA

RI

CT

NJ

DE

MD

DC

CA

NV

UT

CO

NE

KS

MO

IA

IL

IN

OH

MI

PA

WV

VA

NC

AZ

NM

OK

AR

MS

AL

GA

TN

SC

TX

LA

MS

AL

GA

TN

SC

FL

**AUTOMATIC
SYSTEMS**

1-800-263-6548

www.automatic-systems.us

www.automatic-systems.ca

