

RL 603

Technical Datasheet

NAM-RL 603-FT-EN-C

AUTOMATIC
SYSTEMS

Access controlled...
Future secured

 **RevLock**



DESCRIPTION

- 1. Cabin top** made of painted steel to hold the drive mechanism and the control board unit.
- 2. Mobile obstacles** in clear laminated glass, 1/2" - 1/2" - 12/13 mm thick.
- 3. Curved sidewalls** in clear laminated glass, BR2S (EN 1063- Bullet resistant) P6B (EN 356-Vandalism resistant) 3/4" - 13/16" - 19/21 mm thick.
- 4. Control board unit & motorisation** including among other things:
 - Programmable electronic board
 - I/O card for access control system
 - Remote console
 - Voice messaging device
 - Back-up batteries ensuring 100 cycles in case of power failure
 - Electro-mechanical lock of the obstacles *(with unlocking in case of power failure).*
- 5. Overhead lighting** for lighting of the security booth.
- 6. Functional pictograms:** red and green LED displays indicating the status of the security booth.
- 7. Push buttons** for the intercom.
- 8. Key lock mechanism** for the external doors.
- 9. Single person** detection device *(optional)*.

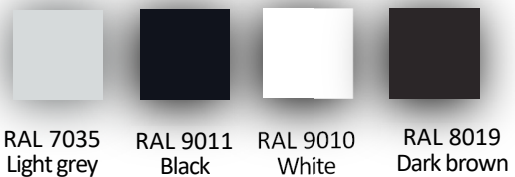
The **RevLock** range of **revolving security doors** are designed to ensure a secure access control and management of high pedestrian flow.

RevLock's high security revolving doors meet the industry standards concerning piggybacking, bullet resistance, forced entry and vandalism.

The 4 mobile obstacles of the **RevLock 603** automatic revolving security door allow for a high bi-directional flow of pedestrians with a free passage width of **35 15/16" (913 mm)** and an external diameter of **76 5/16" (1938 mm)**.

Consisting of a steel frame, glass panels and a painted steel housing, the **RevLock** automatic revolving security doors provide thermal insulation and high visibility of their surrounding environment.

STANDARD RAL COLORS



Non-standard colors must be specified when ordering

SURFACE TREATMENT

All the mechanical parts are treated against corrosion by electro zinc, according to RoHS norms.

WORK TO BE PROVIDED BY OTHERS

- Floor anchors.
- Power supply.
- Connection between booth and access control device, the console and the other RevLock.

 Refer to installation drawing

STANDARD TECHNICAL CHARACTERISTICS

Power supply	120 VAC single-phase, 60 Hz, 10A + ground
Motor	24VDC for reversible movement of the obstacles, with closing safety lock.
Back-up Battery	12V - 18Ah sealed lead-acid batteries to provide power in case of power loss.
Control board	Programmable
Max throughput <i>(depends on validation speed of the access control system)</i>	<ul style="list-style-type: none"> 20 passages per minute in one direction 40 passages per minute if in both directions
Consumption	200 W
Operating T°	from 14° to 131 °F (-10 ° to +55 °C) <i>(without heating option)</i>
Max relative humidity	90%, without condensation
MCBF	2 M cycles or 2 years, with recommended maintenance
MTTR	1 hour
Weight	<ul style="list-style-type: none"> ± 2866 lbs (1200 kg) with base ± 2557 lbs (1160 kg) without base ± 2976 lbs (1350 kg) TOF detection, with base ± 2667 lbs (1210 kg) TOF detection, without base

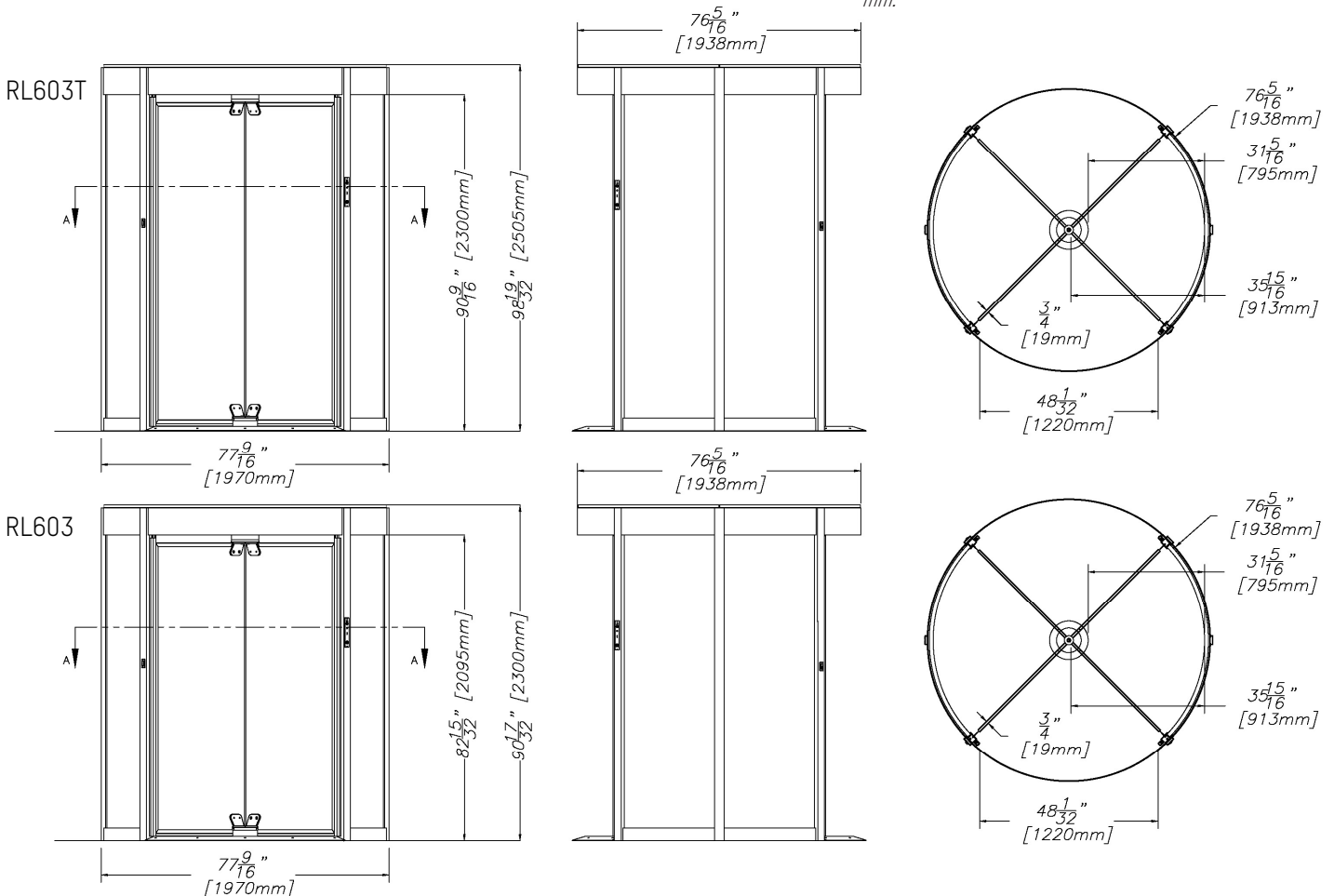
OPTIONS

- Piggybacking sensors (2 ways)/with weight control system or with a time of flight camera (TOF).
- High doors (mandatory for TOF detection).
- BR2S/P6B (Bullet and Vandalism resistant) mobile obstacles.
- BR4S/P6B (Bullet and Vandalism resistant) curved sidewalls and mobile obstacles.
- IP33 rain protection rating.
- Metal roof closing plate.
- Anti-vandalism detection for top covers.
- Non-standard RAL color for housing.
- 304L stainless steel housing (brushed finish).
- Radar for automatic opening of the doors.
- Additional console.
- Long life batteries.
- Converter RS-485 / LAN.
- Kit for electronic adjustment service (cable, software...).

For restrictions on options speak to your sales representative.

STANDARD DIMENSIONS (INCHES & MM)

- Every installation in front of a building will be 2" - 50 mm taller in the middle
- Height of the base with weight sensor system = 1 3/16" - 30 mm.



With a constant view to adopting the latest technological developments, Automatic Systems reserves the right to amend the above information at any time.