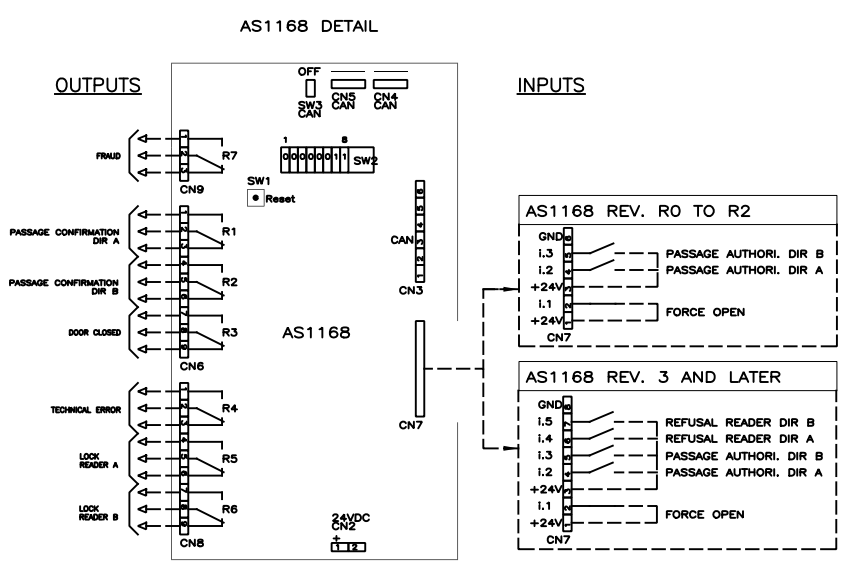
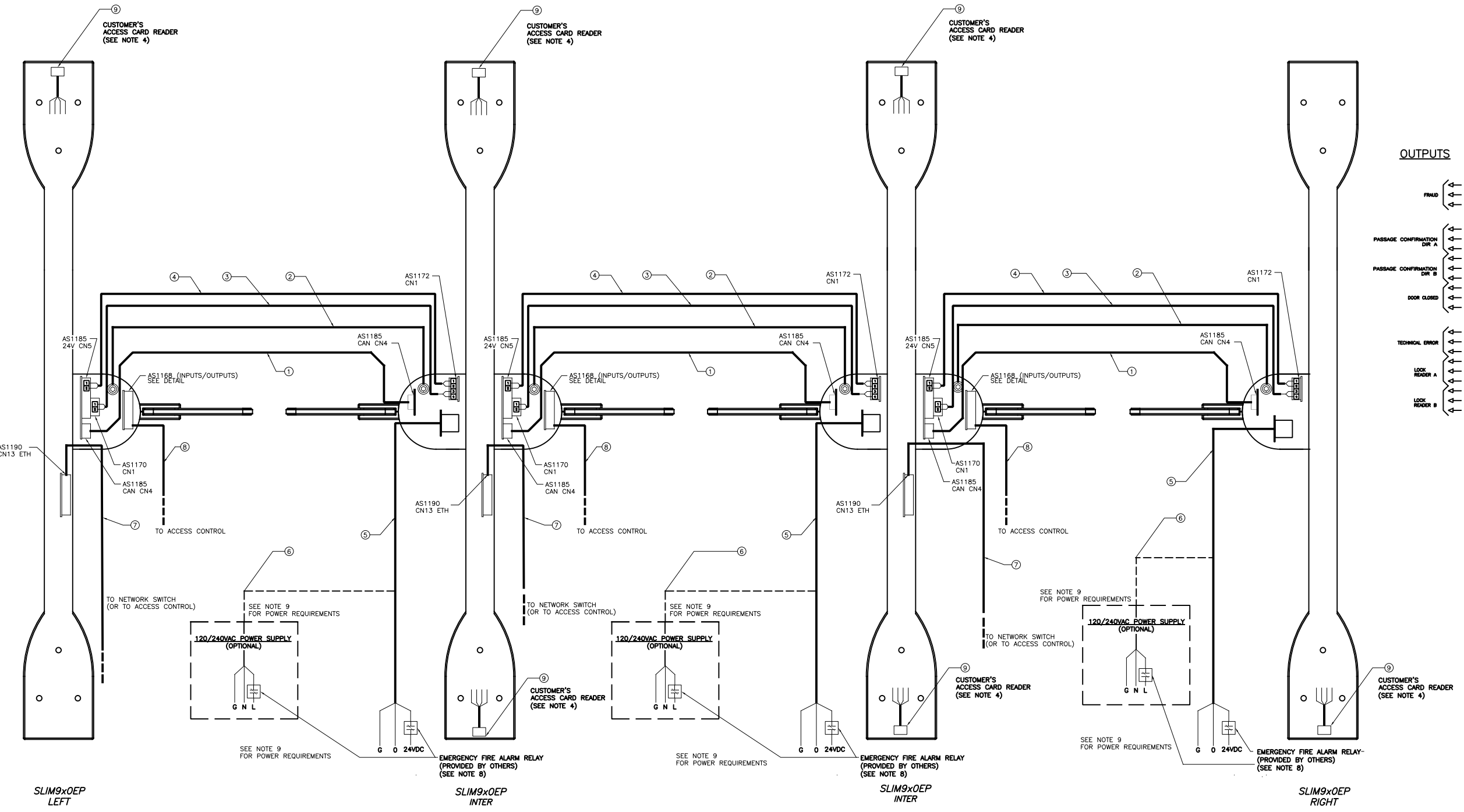


ELECTRICAL CONNECTIONS



#	DESCRIPTION	SUPPLIER
1	"W25" LOW VOLTAGE CABLE, 4 COND.(2 PAIRS), 24 AWG, SHIELDED, 1/4"DIA. X 9.8FT (NOTE 1)	ASA
2	"W10" GROUND CABLE, 1 COND., 14 AWG, 9/64"DIA. X 6.5FT (NOTE 1)	ASA
3	"W14" LOW VOLTAGE CABLE, 2 COND., 18 AWG SHIELDED, 1/4" DIA. X 9.8FT (NOTE 1)	ASA
4	"W13" LOW VOLTAGE CABLE, 2 COND., 18 AWG SHIELDED, 1/4" DIA. X 9.8FT (NOTE 1)	ASA
5	POWER CABLE, 3 COND. 12GA, MAX LENGTH : 100' (NOTE 1 & NOTE 2)	CUSTOMER
6	POWER CABLE, 3 COND. 12GA, (IF 120V OPTION SELECTED) (NOTE 2)	CUSTOMER
7	ETHERNET CABLE, CAT 6	CUST/OPT
8	I/O CABLE (NOTE 6)	CUSTOMER
9	READER CABLE (DEPENDS ON SELECTED READER)	CUSTOMER

NOTE 1: IF THE INSTALLATION REQUIRES LONGER CABLES, PLEASE CONTACT AUTOMATIC SYSTEMS.
 NOTE 2: AS A REFERENCE ONLY. RESPECT ALL LOCAL STANDARDS AND LAWS.
 NOTE 4: ACCESS CARD READER INSTALLED ON RIGHT SIDE OF UNITS IN RELATION TO PASSAGE DIRECTION.
 NOTE 5: ALL INPUTS ARE NORMALLY OPENED, EXCEPT FOR THE FORCE OPEN CONTACT.
 NOTE 6: THE NUMBER OF CONDUCTORS AND WIRE GAUGE IS DETERMINED BY THE CUSTOMER AND DEPENDS ON THE INPUTS AND OUTPUTS REQUIRED, REFER TO "AS1168 DETAIL" VIEW.
 NOTE 7: FOR DETAILED ELECTRICAL DIAGRAM REFER TO NAM-SLIM-EL-01.
 NOTE 8: FOR NON FIRE EMERGENCIES, THE FORCE OPEN CONTACT ON AS1168 BOARD MAY BE USED TO HOLD OPEN THE LANE (INSTEAD OF CUTTING POWER). IT IS THE RESPONSIBILITY OF THE INTEGRATOR/CUSTOMER TO VERIFY IF A SOFTWARE OPENING RESPECTS LOCAL STANDARDS AND LAWS.
 NOTE 9: POWER REQUIREMENT: FOR 24VDC POWER SUPPLY: 15 A FOR 120VAC POWER SUPPLY: 6 A

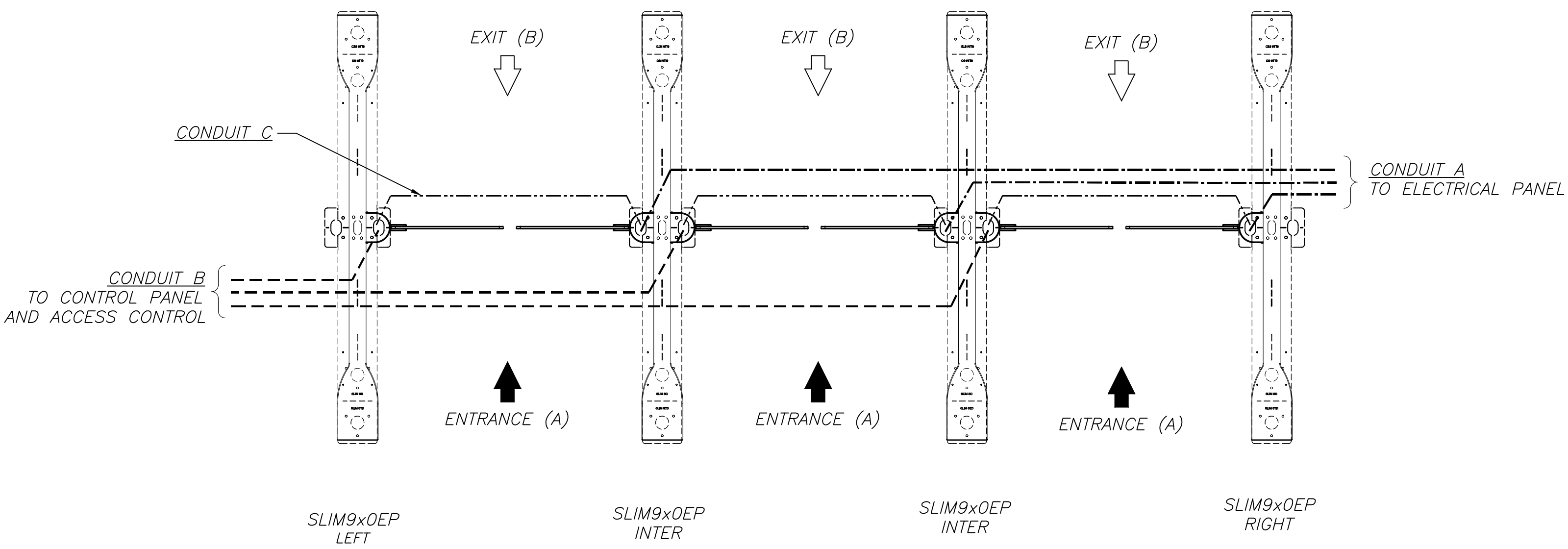
AUTOMATIC SYSTEMS MAKES NO REPRESENTATION AS TO THE PROPER POSITIONING OF THE SECURITY ENTRANCE LANES AT THE INSTALLATION LOCATION. ESTABLISHING THE LAYOUT AND PLACEMENT OF THE UNIT(S) AND DETERMINING COMPLIANCE WITH THE APPLICABLE BUILDING CODES, OTHER CODES, LAWS AND REGULATIONS IS THE SOLE RESPONSIBILITY OF THE PURCHASER. INSTALLATION MUST BE PERFORMED BY A QUALIFIED INSTALLER FOLLOWING MANUFACTURER'S INSTRUCTIONS, OTHERWISE AUTOMATIC SYSTEMS' WARRANTIES MAY BE VOID.

MATÉRIAU/MATERIAL	FICHIER FILENAME	NAM-SLIM-EL-37.DWG
FABRICATION	TRAITEMENT/TREATMENT	EBARBER LES ARÊTES VIVES BREAK ALL SHARP EDGES
Nb./App.	POIDS/WEIGHT	SURFACE FINI/FINISH
LES INFORMATIONS CONTENUES SUR LES DESSINS DE ASA Inc. SONT CONFIDENTIELLES ET SONT LA PROPRIÉTÉ DE ASA Inc. TOUTES REPRODUCTIONS, DISTRIBUTIONS OU UTILISATIONS SONT INTERDITES SANS LA PERMISSION ÉCRITE DE ASA Inc.		IMPERIAL X/X ±1/32" X.X ±0.030" X.XX ±0.015" X.XXX ±0.005"
INFORMATION DISCLOSED HERE IS CONFIDENTIAL AND IS THE PROPERTY OF ASA Inc., ANY REPRODUCTION, DISTRIBUTION OR USE IS PROHIBITED WITHOUT A WRITTEN CONSENT BY ASA Inc.		METRIC X X ±1mm X.X ±0.5mm X.XX ±0.05mm
		ANGLES ± 1/2° SAUF SI INDICUÉS UNLESS OTHERWISE NOTED

REV.	DATE	MODIFICATIONS/CHANGES	PAR/BY
C	2021/04/13	MINOR ADJUSTMENTS AND CORRECTIONS	CLA
B	2019/02/04	NAME MODIFICATION & HOLES REMOVED	EDO

DIMENSIONS		FORMAT	
-		B	
AUTOMATIC SYSTEMS			
TITRE		SLIMLANE 940/950EP 3 LANES	
TITRE		GENERIC ELECTRICAL CONNECTIONS AND CONDUITS LAYOUT	
DESSINÉ PAR	ÉCHELLE/SCALE	DATE	FEUILLE/SHEET
DRAWN BY	OHL	N/A	2015/12/10 1
VERIFIÉ PAR	No. DESSIN/DWG. No.		REV.
CHECKED BY	sOS NAM-SLIM-EL-37		C

CONDUITS LAYOUT



- NOTES:**
- 1- THE NUMBER OF UNITS AND LANES MAY VARY DEPENDING ON CUSTOMER REQUIREMENTS, REFER TO THE SPECIFIC SIGNED LAYOUT DRAWINGS TO ADJUST THE NUMBER OF CONDUITS ACCORDINGLY.
 - 2- ALL WIRING MUST MEET OR EXCEED STANDARDS AND CODES AND MUST BE INSTALLED BY A CERTIFIED TECHNICIAN.
 - 3- 10' OF CABLE RUN MUST BE LEFT UNBURIED.
 - 4- INSTALLATION OF A PULLING LINE BETWEEN EACH GATE IS RECOMMENDED.
 - 5- UNITS MUST BE SECURED/ANCHORED TO THE STRUCTURAL FLOOR WITH THE PROVIDED HARDWARE PRIOR TO USE.
 - 6- CONDUITS SHALL BE BURIED AT LEAST 5" BELOW THE FINISHED FLOOR SURFACE TO AVOID CONTACT WITH ANCHORS (2-3/4" LONG).

- 7- CONDUIT DETAILS:**
- CONDUIT A- USE : POWER CABLE (TO ELECTRICAL PANEL)
SIZE : PVC 3/4"
NOTE: SEPARATE POWER FEEDS ARE NECESSARY FOR EACH RIGHT AND INTERMEDIATE UNITS (CABLE SUPPLIED BY CUSTOMER).
 - CONDUIT B- USE : CONTROL PANEL AND ACCESS CONTROL (READERS, BIOMETRIC ETC...) CABLES.
SIZE : PVC 3/4" OR 1" MAX.
NOTE: CONDUIT TO EACH LEFT AND INTERMEDIATE UNITS. LOW VOLTAGE CABLES ONLY (CABLES SUPPLIED BY CUSTOMER, IF APPLICABLE)
 - CONDUIT C- USE: LOW VOLTAGE INTERCONNECTION CABLES.
SIZE : PVC 3/4"
NOTE: 1 CONDUIT PER LANE (CABLES SUPPLIED BY ASA).

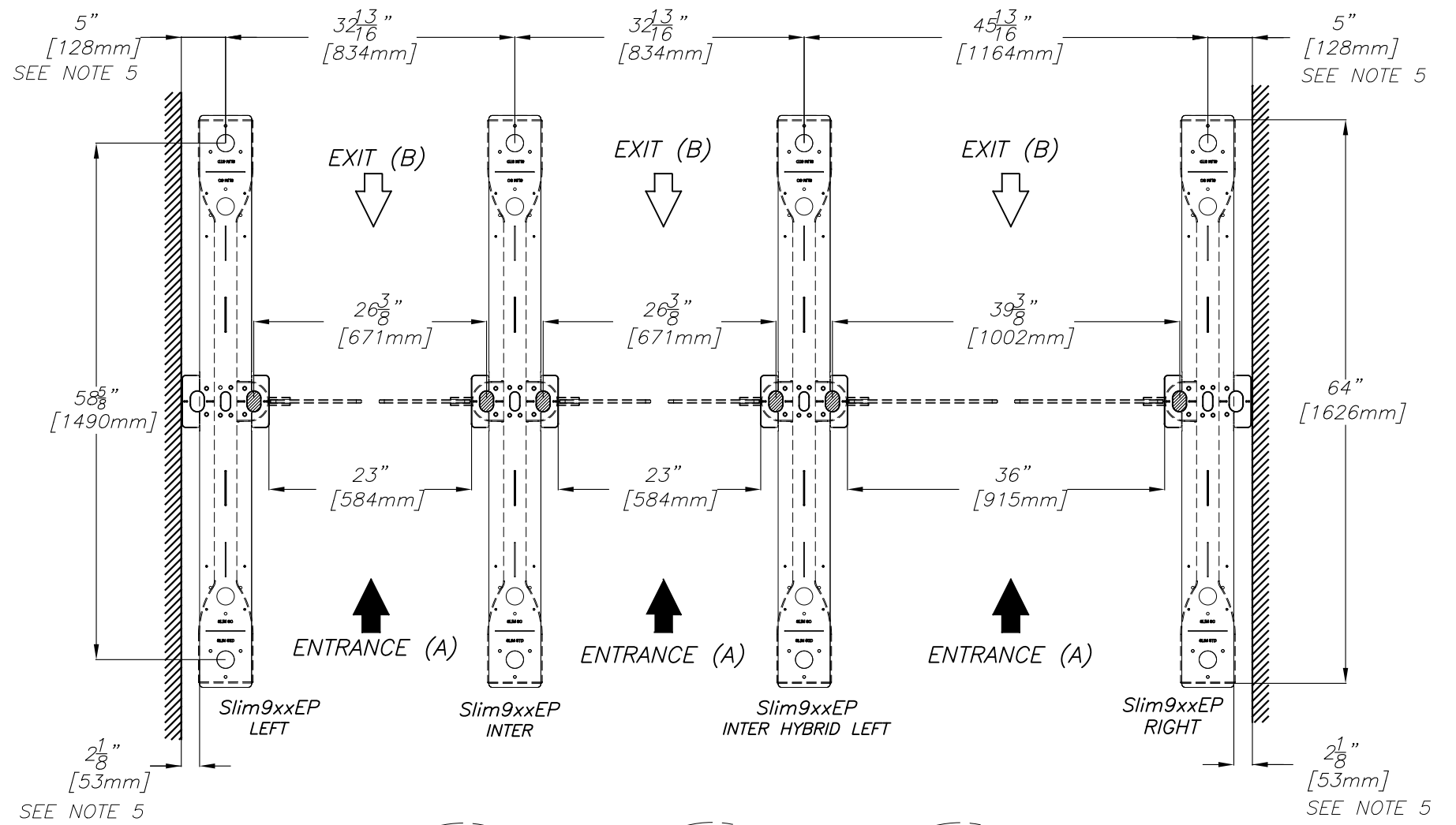
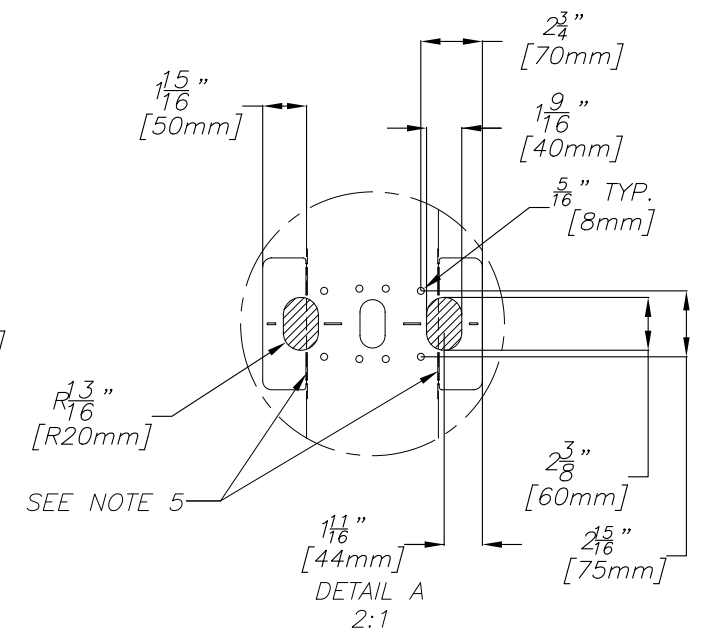
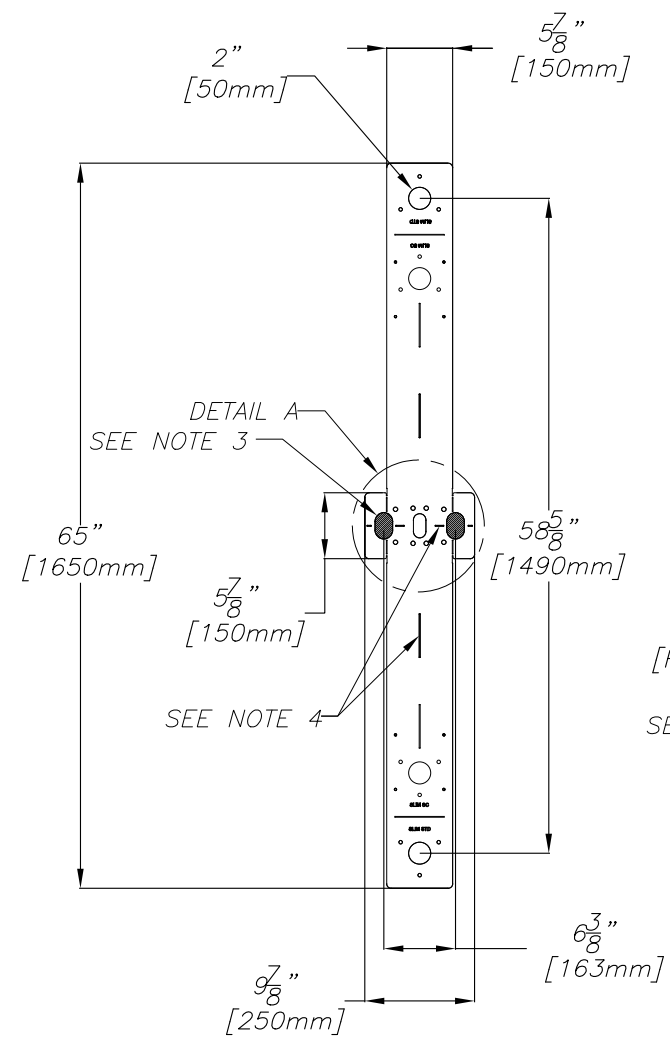
CONDUIT A -----
 CONDUIT B -----
 CONDUIT C -----

AUTOMATIC SYSTEMS MAKES NO REPRESENTATION AS TO THE PROPER POSITIONING OF THE SECURITY ENTRANCE LANES AT THE INSTALLATION LOCATION. ESTABLISHING THE LAYOUT AND PLACEMENT OF THE UNIT(S) AND DETERMINING COMPLIANCE WITH THE APPLICABLE BUILDING CODES, OTHER CODES, LAWS AND REGULATIONS IS THE SOLE RESPONSIBILITY OF THE PURCHASER. INSTALLATION MUST BE PERFORMED BY A QUALIFIED INSTALLER FOLLOWING MANUFACTURER'S INSTRUCTIONS, OTHERWISE AUTOMATIC SYSTEMS' WARRANTIES MAY BE VOID.

MATÉRIAU/MATERIAL	FICHER FILENAME	NAM-SLIM-EL-37.DWG		
FABRICATION	TRAITEMENT/TREATMENT	EBARBER LES ARÊTES VIVES BREAK ALL SHARP EDGES		
Nb./App.	POIDS/WEIGHT	SURFACE	FINI/FINISH	
		LES INFORMATIONS CONTENUES SUR LES DESSINS DE ASA Inc. SONT CONFIDENTIELLES ET SONT LA PROPRIÉTÉ DE ASA Inc. TOUTES REPRODUCTIONS, DISTRIBUTIONS OU UTILISATIONS SONT INTERDITES SANS LA PERMISSION ÉCRITE DE ASA Inc.		
		INFORMATION DISCLOSED HERE IS CONFIDENTIAL AND IS THE PROPERTY OF ASA Inc., ANY REPRODUCTION, DISTRIBUTION OR USE IS PROHIBITED WITHOUT A WRITTEN CONSENT BY ASA Inc.		
		IMPERIAL	METRIC	
		X/X ±1/32"	X ±1mm	
		X.X ±0.030"	X.X ±0.5mm	
		X.XX ±0.015"	X.XX ±0.05mm	
		X.XXX ±0.005"		
		ANGLES	± 1/2°	
		SAUF SI INDIQUÉS UNLESS OTHERWISE NOTED		

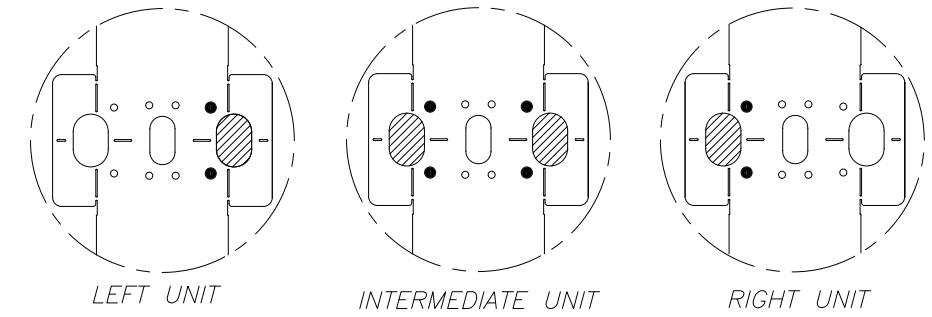
REV.	DATE	MODIFICATIONS/CHANGES	PAR/BY
TITRE		SLIMLANE 940/950EP 3 LANES	
TITRE		GENERIC ELECTRICAL CONNECTIONS AND CONDUITS LAYOUT	
DESSINÉ PAR	ECHELLE/SCALE	DATE	FEUILLE/SHEET
DRAWN BY	OHL	N/A	2015/12/10
DE/OF			3
VÉRIFIÉ PAR	No. DESSIN/DWG. No.		REV.
CHECKED BY	NAM-SLIM-EL-37		C

SLIMLANE TEMPLATE POSITIONING LAYOUT



NOTES:

- 1- THE NUMBER OF UNITS AND LANES MAY VARY DEPENDING ON CUSTOMER REQUIREMENTS. REFER TO THE SPECIFIC SIGNED LAYOUT DRAWINGS FOR FINAL POSITIONING OF THE TEMPLATES.
- 2- FIXED TO FLOOR WITH CHEMICAL ANCHORS, DRILL $\phi 1/2"$ X 2-3/4" DEEP. ANCHORS PROVIDED BY ASA, CHEMICAL ADHESIVE TO BE SUPPLIED BY CUSTOMER.
- 3- HATCHED AREAS SHOW CONDUIT ENTRY ZONES.
- 4- LINEAR CUTOUTS TO HELP ALIGN TEMPLATE ON CHALK LINE.
- 5- FOLD AND BREAK TEMPLATE WHERE INDICATED TO INSTALL UNIT CLOSER TO THE WALL.



LOCATION OF ANCHORS ACCORDING TO UNIT TYPE

AUTOMATIC SYSTEMS MAKES NO REPRESENTATION AS TO THE PROPER POSITIONING OF THE SECURITY ENTRANCE LANES AT THE INSTALLATION LOCATION. ESTABLISHING THE LAYOUT AND PLACEMENT OF THE UNIT(S) AND DETERMINING COMPLIANCE WITH THE APPLICABLE BUILDING CODES, OTHER CODES, LAWS AND REGULATIONS IS THE SOLE RESPONSIBILITY OF THE PURCHASER. INSTALLATION MUST BE PERFORMED BY A QUALIFIED INSTALLER FOLLOWING MANUFACTURER'S INSTRUCTIONS, OTHERWISE AUTOMATIC SYSTEMS' WARRANTIES MAY BE VOID.

MATÉRIAU/MATERIAL	FICHER FILENAME	NAM-SLIM-EL-37.DWG	DIMENSIONS		FORMAT	REV.	DATE	MODIFICATIONS/CHANGES	PAR/BY	
-	FABRICATION	TRAITEMENT/TREATMENT	-		B					
		EBARBER LES ARÊTES VIVES BREAK ALL SHARP EDGES								
Nb./App.	POIDS/WEIGHT	SURFACE	FINI/FINISH	IMPERIAL	METRIC					
-	-	-	-	X/X ±1/32"	X ±1mm					
				X.X ±0.030"	X.X ±0.5mm	TITRE SLIMLANE 940/950EP 3 LANES				
				X.XX ±0.015"	X.XX ±0.05mm	TITRE GENERIC ELECTRICAL CONNECTIONS AND CONDUITS LAYOUT				
				X.XXX ±0.005"		DESSINÉ PAR	ECHELLE/SCALE	DATE	FEUILLE/SHEET	DE/OF
				ANGLES	± 1/2°	DRAWN BY	N/A	2015/12/10	3	3
				SAUF SI INDIQUÉS UNLESS OTHERWISE NOTED		VÉRIFIÉ PAR	No. DESSIN/DWG. No.			REV.
						CHECKED BY	NAM-SLIM-EL-37			C